

SYSTEM 2

Panel System

System 2 is a time-honored classic, combining functionality with affordability. This practical and flexible system has panels that reconfigure as needed to help your team grow or restructure a department easily. System 2 is an economical solution to all your office environment needs, also available on our 10-Day Quickship program in more than 20 fabrics and finishes.

friant.com/systems-2



SYSTEM 2



KEY FEATURES

- Panels available in hard-surface laminate, fabric, or acoustical
- Glass: Partial glazed and frameless
- Compatible with our height-adjustable My-Hite tables
- Wide variety of work surfaces, supports and storage

QUICKSHIP AVAILABLE

- Available to ship in 10 working days at a reduced price from Standard
- Choose from our most popular sizes, available in a curated selection of fabrics and worksurface finishes

WARRANTY

- Limited Lifetime Warranty
- Visit friant.com/warranty for more details

WORKSURFACES



PAINT



PANEL MATERIALS

- Fabric
- Hard-surface Laminate
- Acoustical

ELECTRICAL / TECHNICAL

- Pre-installed 8-wire, 4 20-amp circuits with easy connections
- Powered and non-powered panel options
- Floor or ceiling connectivity
- Cable lay-in capability - large 5" X 3.5" base allows for large quantities of cables
- Upwards of 65 Cat 6 Cables in powered base, 130 cables in non-powered base

GENERAL DIMENSIONS

Fabric and Hard-surface Laminate Panels

- H: 32", 39", 47", 53", 62", 67", 85"
- D: 3.5" base
- W: 12", 18", 24", 30", 36", 42", 48", 60"

Acoustical Panels

- H: 53", 62", 67", 85"
- D: 3.5" base
- W: 12", 18", 24", 30", 36", 42", 48", 60"

Partial Glaze Panels

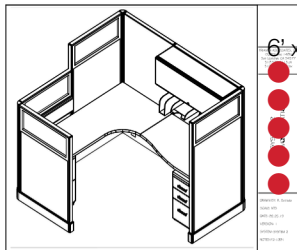
- H: 53", 67", 85"
- D: 3.5" base
- W: 24", 30", 36", 42", 48", 60"

ENVIRONMENT

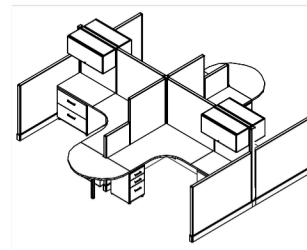
- CARB compliant, made with only water-based, non-toxic low-emission adhesives
- Certified by MAS for minimal off-gassing
- Up to 75% recyclable (all materials except wood are recyclable due to its finishes and adhesives)
- Up to 45% recycled content (30% pre-consumer, 15% post-consumer) in a typical configuration
- May contribute to LEED points

TYPICALS

Click to visit the **DRC** for more



- 6' x 7', 67"H/ 53"H
- Partial Glazed panels
- Tackboard and tool bar with paper trays
- Curved corner and asymmetrical worksurface
- Locking painted flipper overhead with tasklight
- Supporting box/box/file and file/file pedestals



- 7' x 7', 67"H/47"H
- Locking painted flipper overheads with tasklights
- Supporting laterals and box/box/file pedestals
- Half-round and curved corner worksurfaces